



The Baker Bulletin

A
Baker County
Extension
Service Monthly
Newsletter

INSIDE THIS ISSUE:

Horticulture	2
Upcoming Events	3
Calendar	4
Upcoming Events	5
4-H	6
Agriculture	7
Notices	8

Dear Extension Friends,

I sincerely hope that you weathered the recent hurricane with minimal damage. If you are still recovering and need information or resources to help you get back to normal, please let us know so that we may assist you in any way that we can. Looking ahead, we have some major changes coming to our newsletter and website. If you enjoy reading our newsletter, please take a moment to complete our readership survey and sign up for the new e-newsletter at: <https://goo.gl/forms/Jp5vfCUzOvwSHkKz2>

Sincerely,

Alicia

Alicia Lamborn
Interim Director / Horticulture Agent
UF/IFAS Extension Baker County



Contact Information—Baker County Extension Service

1025 W. Macclenny Ave., Macclenny, FL 32063

Phone: (904) 259-3520, FAX: (904) 259-9034

Email: baker@ifas.ufl.edu Hours: M—F 8:30am to 5:00pm (Closed Noon to 1:00pm for Lunch)

Michael Davis, Ph.D.
michael.davis@ufl.edu
Agriculture Agent

Alicia Lamborn
alamborn@ufl.edu
Horticulture Agent

Shaina Spann
slbennett@ufl.edu
4-H Youth Development Agent



Highlights in Horticulture

By:
Alicia Lamborn,
Horticulture Agent

Wasps now available to homeowners to fight Asian Citrus Psyllid Pest

Homeowners with citrus trees in their yards can apply online to have parasitic wasps mailed to them that can then be released onto citrus trees.

The Florida Department of Agriculture and Consumer Services is making the Asian Citrus Psyllid parasite *Tamarixia radiata* available for homeowners, in an attempt to stop the spread of Citrus Greening.

Florida residents can apply online to the department for tiny parasitic wasps called Tamarixia that hunt the Asian citrus psyllid, an invasive insect that spreads the fatal disease "citrus greening." The psyllid carries the infection, which plugs the plant's phloem, starves the tree and causes fruit to drop prematurely. Tamarixia feed on the pest and lay eggs inside young psyllids, killing them and, hopefully, the bacteria that cause the disease. The Tamarixia release program is one of several tools researchers and growers use to slow greening's spread.

When you apply online to receive the wasps, the program will coordinate with the requestors for appropriate pickup dates and times from the Extension Office.

Apply online at:

www.FreshFromFlorida.com/TRA



Parasitic wasps (pictured above) are now available to help combat the disease carrying Asian Citrus Psyllid in Florida (right).



WHAT TO PLANT IN NORTH FLORIDA



OCTOBER

FLOWERS

- Alyssum
- Baby's Breath
- Calendula
- Dianthus
- Dusty Miller
- Foxglove
- Geranium
- Hollyhock
- Ornamental Cabbage/Kale
- Pansy
- Petunia
- Snapdragon
- Verbena
- Viola

VEGETABLES

- Arugula
- Beets
- Broccoli
- Brussels Sprouts
- Cabbage
- Carrots
- Cauliflower
- Celery
- Chinese Cabbage
- Collards
- Endive/Escarole
- Kale
- Kohlrabi
- Lettuce
- Mustard
- Onions, bunching & bulbing
- Radish
- Spinach
- Strawberries
- Swiss Chard
- Turnips

PLANT SELECTION & FERTILIZING TIPS

Choose adapted varieties with resistance or tolerance to nematodes and common diseases.

Purchase healthy transplants that are free of insects and disease symptoms (such as leaf spots or blights).

RESOURCES :

Gardening with Annuals in Florida
<http://edis.ifas.ufl.edu/pdf/files/MG/MG31900.pdf>

Avoid vegetable transplants that are already flowering. Consider growing your own transplants from seed.

Florida Vegetable Gardening Guide
<http://edis.ifas.ufl.edu/pdf/files/VH/VH02100.pdf>

Controlled-release fertilizers provide a continuous nutrient supply over an extended period of time. For best results, apply at the labeled rate or based on your soil test results.



2017 Agriculture Census



The 2017 Census of Agriculture is taken every 5 years and will be mailed to ranchers and farmers in the United States in fall of 2017. The census is taken by the United States Department of Agriculture National Agriculture Statistics Service (USDA-NASS). The census provides invaluable data to those who serve farmers, ranchers, and rural communities. These entities include federal, state, and local governments, agribusinesses, trade associations, Extension educators, and researchers. Results from the census help shape farm programs and boost services for communities and the industry. If you are a farmer or rancher in Baker County, be on the lookout for the Census this fall and make sure to send it back in. If wish to register yourself for future Censuses of Agriculture, please visit <https://www.agcounts.usda.gov/legacy0/cgi-bin/counts> so that USDA can put you on the list for 2022. Additional information about the upcoming census and data from the past census(es) can be found at <https://www.agcensus.usda.gov/>. If you receive a census and have questions, please contact either the USDA or drop by the Extension Office (1025 W. Macclenny Ave., Macclenny, FL 32063) to speak with your Agriculture Agent.



STRAWBERRY PLANT FUNDRAISER

'Camino Real' Strawberries

- Released by University of California
- Plants are small and compact
- Fruiting begins in late winter
- Good per-plant yields
- Large fruit with very good flavor

10 plants - \$5

50 plants - \$20

PRE-ORDER TODAY

PAY AT PICK UP

259-3520

1025 w. macclenny ave.

October 2017

Sun	Mon	Tue	Wed	Thu	Fri	Sat
1	2	3	4	5	6	7
BAKER COUNTY FAIR - For more information go to http://bakercountyfair.com						
						
8	9	10	11	12	13	14
						
15	16	17	18	19	20	21
						
22	23	24	25	26	27	28
29	30	31				
						

Upcoming Programs are marked with a Program Area Symbol. Please match these symbols with the list on the following page for more information about the program.



4-H



Horticulture



Agriculture

Upcoming Programs & Events

Programs will be held at the Baker County Extension Office (Agricultural Center) unless otherwise noted.

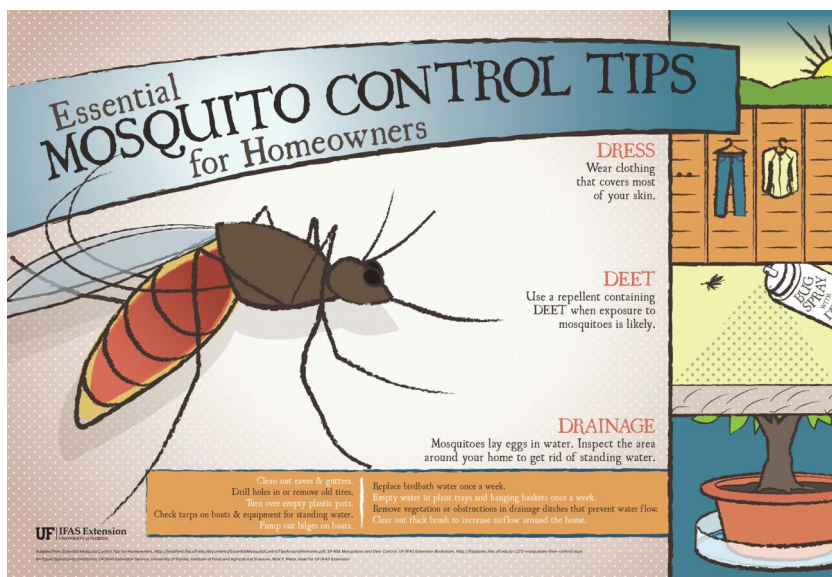
Oct 14 **“Try A Day of Camp” Northeast District 4-H Kick-Off, 10am-4pm, Camp Cherry Lake, Madison, FL.** Feel free to bring the family! There will be tracks and activities for youth ages 5 to 12. Cost is \$10 and includes lunch. This experience will simulate a classic Camp Cherry Lake day and give youth a taste of 4-H residential camp. Senior youth, ages 13-18 can participate in a track for Teen Leadership.



4-H Halloween Escape Room! October 19 & 20
4pm—7:30pm Cost: \$5 per person Runs every 30 minutes
Baker County Agricultural Center



Have you escaped from a room before?! Your group of 8-12 people will have 30 minutes to get spooky with 4-H and escape from the 4-H classroom! This event is family friendly and open for everyone! The room will run every 30 minutes, with the last group starting at 7:30pm. Bring a friend!
Registration is available through Eventbrite. <https://www.eventbrite.com/o/15134614863>



Free Mosquito Control Products

Free of charge, Baker County is offering mosquito dunks and spray repellent to residents. Products are available for pick up at the Baker County Extension Office. One each per household. No pickups for other addresses, only your own.
While supplies last!



4-H Club Meetings

Cloverleaf Cloggers — Every Monday at 7pm in the auditorium. Contact club leader or office to confirm. (No Clogging Meeting on Oct 23rd)

Livestock Club — Fourth Tuesday of each month at 6pm In the auditorium. Go to Baker County 4-H Livestock Club Facebook Page. **Livestock Club Banquet November 14 at 6:30pm at Ag Center Auditorium.** No club meetings Oct, Nov, Dec.

Outdoors/Shooting Sports Club—For more information, go to Baker County 4-H Outdoors Club Facebook page.

Upcoming 4-H Events

October

06-08– First Executive Board, Camp Cherry Lake

14– Northeast District Kick-Off, Try a Day of Camp & Teen Track, Camp Cherry Lake, \$10, register @ Eventbrite

19 & 20– 4-H Halloween Escape Room! 4:00pm-7:30pm Cost: \$5 per person. Runs every 30 minutes. Remember to enroll for the new 4-H year and pay the membership fee. It is REQUIRED for membership.

**** New Horse Club****
If you are interested in joining a horse club please let Mrs. Shaina know!

Lucky Clover Chronicle

By:

*Shaina Spann,
4-H Agent*

6

It's that time of year again! Time to enjoy the corn dogs, funnel cakes, rides, and animals!

Getting ready for the fair can be stressful. This checklist can help you get ready and feel more prepared.

- 1. Be enrolled for the 4-H year.** To be able to show an animal at the Baker County Fair with 4-H ALL youth must be enrolled in [4HOnline](#) and have the \$20 [enrollment fee](#) paid. Youth who do not complete these requirements will NOT be admissible to show.
- 2. Healthy and clean animals.** When we are taking animals to the fair for exhibition or show we need to make sure that they are in good health, and look nice. Many people who are not familiar with the livestock industry come to the fair to see all of the "farm animals". Our fair is the only opportunity some people get to see livestock animals. We should make sure that the animals look nice and the public can see that they are being well cared for. This also means you should keep the pens, food, and water dishes clean.
- 3. 4-H attire.** The proper clothing to wear when showing your animal (show and sale) is a white collared button down shirt with the 4-H logo on the upper left side, black pants, but dark jeans can be acceptable, black shoes/boots, and a positive attitude. There is an option to order green corduroy jackets and vests (you can also borrow one from 4-H) from the [Universal Lettering Company](#) as well.
- 4. Label all belongings.** When you are at the fair with your show animal, you may have a show stick, brushes, feed buckets, etc. these items tend to grow legs and walk off if they aren't marked to be someone's property. This is an unfortunate thing that happens, and the best thing to do is label everything and put them in a locked box.
- 5. Buyers' letters.** Buyers' letters are sent out prior to the fair to invite business owners, community members, and anyone who would like to support the youth of the community. You should include information about yourself as well as a picture of you with you project animal(s) and don't forget to invite them to the show, buyers' dinner, and sale.
- 6. Buyers' gift.** Typically on the night of the sale, youth selling their projects put together some sort of gift basket, wreath, goody bag, etc. as an immediate for their buyer.
- 7. Night of the sale.** You've done everything above and it's the moment you've been waiting for! You sell your animal, shake hands with the buyer(s) and see that they get their gift. You still have to take care of your project until all of the market animals are taken to be harvested on the Sunday of the end of the fair.
- 8. Buyers' letters.** It's been a month since the fair, and you accomplished the job of raising an animal for multiple months, and selling it. Once you get notification of whom your buyer(s) were and whom gave add-ons (an amount of money given as an addition to your project by various businesses and individuals) it is time to write thank you letters. Per the Baker County Fair Association Livestock Committee, [rules](#) state that all thank you notes are to be sent out by November 30, 2017. If not, the exhibitor will forfeit \$50 of check amount; January 10, 2018, exhibitor will forfeit \$100 of check amount; January 31, 2018, exhibitor will forfeit \$200 of check amount. Forfeited funds will be used for a scholarship fund.



2017 Baker County Fair Animal Exhibition Check-In, Show, & Check-Out Times

Small Animals (Poultry & Rabbits)

Check-In: Friday, September 29, 3:00pm-6:00pm
Exhibitors/Parents meeting: Friday, September 29, 6:30pm
Poultry Judging: Monday, October 2, at 4:00pm
Poultry Showmanship: Monday, October 2, at 6:00PM
Rabbit Show: Immediately following poultry showmanship.
Check-out: Saturday, October 7, after 10:00pm

Goats, Beef Breeding, and Market Steer Animals

Check-In: Friday, September 29, 3:00pm-6:00pm
Exhibitors/Parents meeting: Friday, September 29, 6:30pm
Goat Show: Tuesday, October 3, 6:00pm
Registered Beef Show: Immediately following goat show

Commercial Heifer Show: Immediately following registered beef
Market Steer Show: Immediately following beef shows
Record Book Deadline: Monday, October 2, 7:00 PM
Non-market animals may check out on Saturday after 10:00pm

Market Swine Animals

Final Weigh-in: Sunday, October 1, 2:00 PM –6:00PM
Exhibitors/Parents meeting: Sunday, October 1 at 6:30PM
Record Book Deadline: Monday, October 2, 7:00 PM
Swine Show: Wednesday, October 4, 7:00 PM

Youth Market Steer & Swine Sale

Buyers' Dinner: Thursday, October, 5., 5:00pm
Auction: Thursday, October, 5, 6:30pm

Common Fall Weeds for Northeast Florida

Mimosa Tree

Description—Mimosa trees are very distinctive because of their leaf pattern. They have alternate compound leaves with pink, showy blooms in the spring. The mimosa tree also has large seed pods that can reach 6 inches in length. It is often found along fence lines, road sides and other disturbed areas.

Control—Apply Remedy in a 15% solution with basal oil applied to the lower 12-15 inches of bark around the entire stem. Spray until the bark is wet, but not to the point of runoff and do not apply to wet bark. The leaves can be spot treated with 1% Imazapyr or 2% Triclopyr. Large trees should be cut down and the stump treated with 50% Garlon3A immediately to prevent regrowth.



Chinese Tallow

Description—The Chinese Tallowtree has simple leaves with a distinct point at the tip. The sap from the tree is milky and the fruiting body is 3-lobed with a capsule that stays on the tree through the fall. It is also known as the 'popcorn tree'.

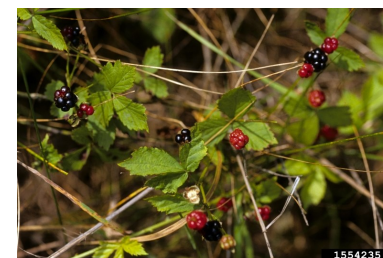
Control—Apply Remedy in a 15% solution with basal oil applied to the lower 12-15 inches of bark around the entire stem. Spray until the bark is wet, but not to the point of runoff and do not apply to wet bark. The leaves can be spot treated with 1% Imazapyr or 2% Triclopyr. Large trees should be cut down and the stump treated with 50% Garlon3A immediately to prevent regrowth.



Blackberry

Description—Blackberry is a woody, perennial bush that forms thickets and can invade grazed pastures. Also found along fence lines and distressed areas. It can be very hard to control due to the large underground root system.

Control—Multiple applications are often needed. Remedy (1qt/ac) or Pasturegard (2qt/ac) will give rapid brown-out, but 20-30% regrowth is expected. Control is best achieved when applied late in fall, prior to the first frost with a reapplication in spring.



Spiny Amaranth

Description—This plant is also called 'careless weed'. It is common within heavily trafficked areas of pasture. Each weed can produce thousands of seeds multiple times during the year. Therefore, it can out-compete existing grass.

Control—Many herbicides are effective, including: 2,4-D; Weedmaster; GrazonNext and Telar.

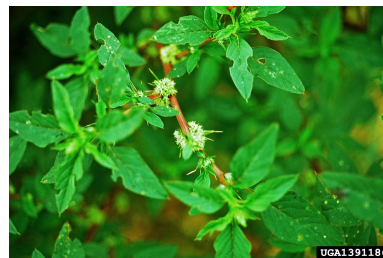


Photo Credits:

Mimosa—Chuck Barger, University of Georgia, Bugwood.org; **Chinese Tallow**—Charles T. Bryson, USDA Agricultural Research Service, Bugwood.org; **Blackberry**—Ohio State Weed Lab Archive, The Ohio State University, Bugwood.org; **Spiny Amaranth**—John D. Byrd, Mississippi State University, Bugwood.org

Baker County Extension Service
1025 West Macclenny Avenue
Macclenny, FL 32063

Phone: (904) 259-3520
FAX: (904) 259-9034
Email: baker@ifas.ufl.edu
Website: <http://baker.ifas.ufl.edu>

Non-Profit Org.
US Postage
PAID
Permit No. 17
Macclenny FL 32063

ADDRESS SERVICE REQUESTED

Extension programs are open to all people regardless of race, color, age, sex, handicap, or national origin. In accordance with the Americans with Disabilities Act, any person needing a special accommodation to participate in any activity, should contact the Baker County Cooperative Extension Service at 1025 West Macclenny Avenue, Macclenny, FL 32063 or telephone (904) 259-3520 no later than five (5) days prior to the event. Hearing impaired persons can access the foregoing telephone by contacting the Florida Relay Service at 1-800-955-8770 (voice) or 1-800-955-8771 (TDD).



Looking ahead to 2018....

Stay Connected with Baker County Extension and Get Your Information On The Go!

- ◆ **New Website** beginning November 1st - <http://baker.ifas.ufl.edu>
- ◆ **New Baker County Extension Blog** (available now) - <http://blogs.ifas.ufl.edu/bakerco>
- ◆ **New E-Newsletter** beginning January 1st - sign up now on our website (or in our newsletter survey - <https://goo.gl/forms/Jp5vfCUzOwvSHkKz2>)
- ◆ **Facebook pages** - Baker County Garden Spot & Baker County 4-H
- ◆ **4-H App** - Search 'Baker County 4-H' in your app store