



## The Baker Bulletin

A  
Baker County  
Extension  
Service Monthly  
Newsletter

### Baker County Extension Service

1025 W. Macclenny Ave.  
Macclenny, FL 32063

Phone: (904) 259-3520

Email: baker@ifas.ufl.edu

Hours: M—F 8:30am to 5:00pm  
(Closed Noon to 1:00pm for Lunch)

#### County Agents

**Alicia Lamborn**  
Horticulture Agent

**Shaina Spann**  
4-H Youth Development Agent

**Alicia Halbritter**  
Agriculture & Natural Resources Agent

Dear Extension Friends,

This year, the 4-H Program is seeking monetary donations rather than holding a public auction. Your contribution helps provide partial and complete scholarships for children to attend events like Camp Cherry Lake, 4-H Legislature, 4-H University, as well as help fund volunteer screenings and school enrichment projects. If you have donated items to the auction in the past (or even if you haven't), consider making an equal monetary contribution to this worthy cause. Please see page 4 for more details.

Sincerely,

Alicia Lamborn  
County Director / Horticulture Agent  
UF/IFAS Extension Baker County

<http://baker.ifas.ufl.edu>

<http://blogs.ifas.ufl.edu/bakerco>

[Baker County Garden Spot](#)  
[Baker County 4-H](#)

Search "Baker County 4-H" in your app store

### Upcoming Classes & Events

- June 24-28** **4-H Camp Cherry Lake, Madison, FL.** Ages 8+. Early registration due May 3rd: Member \$250/Non-Member \$260; Late registration by June 17th: Member \$270/Non-Member \$280. Spend a fun and educational week away from home!
- July 8-11** **4-H Chopstix Camp, 9:00am to 4:00pm.** Meet at Baker County Extension Office. \$60 Registration; Ages 10+. Deadline to register: July 1st. This field trip camp will explore Asian cuisine and culture from the farm to the table!
- July 16** **Corn Field Day, 5pm, Suwannee Valley—NFREC, Live Oak.** Join us at the Suwannee Valley Research Center to hear an update on UF corn research projects. Save the date! Registration to be announced.
- July 16** **Grape Field Day, 9:30am to 3:30 pm, Frank Stronach Conference Center, 2556 West Highway 318, Citra, FL.** No registration fee. RSVP by July 9 to Staci Sanders (352) 591-2678 or [grapefieldday2019uf-ifas.eventbrite.com](http://grapefieldday2019uf-ifas.eventbrite.com).
- July 25** **Livestock & Forage Field Day, Santa Fe River Ranch, Alachua,** \$20 pre-registration, \$50 at the door, Youth \$5. Learn about topics like forage economic outlook, nozzle selection, weed control in pastures, haylage, soil fertility/sampling, calving simulation demonstration and forage systems.
- Jul 30-Aug 2** **4-H University, University of Florida, Gainesville.** \$260 registration fee; Ages 14-18. Deadline to register: June 30th.
- Aug-Sept** **Master Gardener Training, Baker County Extension Office.** \$100 registration fee; applications due July 19th. Volunteer training classes held Tuesdays and Thursdays, August 6 through September 12. See page 7 for more details.

# Highlights in Horticulture

By:  
*Alicia Lamborn,*  
*Horticulture Agent*



2

## June Gardening Tips

### Flowers

- Prune back tall growing perennials to control height and encourage lateral branching for increased flowers.
- Plant colorful annuals that can tolerate the heat. See page 3 for a list of options.

### Trees & Shrubs

- Scout frequently for pest problems like aphids and scale. Lace bug and spider mite problems often increase during hot, dry weather.



Aphids hiding on the underside of a leaf.

### Lawns

- Stay ahead of the weeds by hand pulling or spot treating as needed. For information on weed control, go to <http://edis.ifas.ufl.edu/EP141>.
- Plant turf plugs now to fill those bare spots in the lawn. If left bare, weeds will fill the void.
- Mow at the appropriate height to help control weeds and develop a deep root system. Bahia: 3-4" / Bermuda: 0.5-1.5" / Centipede: 1.5-2" / St. Augustine standards: 3.5-4" / St. Augustine dwarfs: 2-2.5" / Zoysia: 1-3"
- Calibrate the sprinkler system to deliver ½" to ¾" each time you water. Water when the grass blades fold or when footprints remain in the grass.

### Vegetables & Herbs

- When spring crops begin to fade, replace them with lima beans, southern peas, okra and sweet potato.
- Use low volume irrigation like drip tubing or soaker hoses to supply water to the garden. This helps conserve water and reduce disease problems by keeping water off of the leaves.



### Fruits & Nuts

- Peach, nectarine and plum trees should be pruned lightly after harvest to maintain the open center of the canopy which allows light in to stimulate growth of new fruiting wood.
- Established fig trees can be pruned after fruit harvest to eliminate dead or diseased limbs, limbs that cross or rub together, and to remove long slender "water sprouts". Larger plants can be trimmed back to maintain the bushy shape and make reaching fruit easier.
- For information on fertilizing in the orchard, see page 3.

## Visit a Local U-Pick Farm

A trip to a local U-pick farm makes a fun family outing. You can enjoy fresh air and sunshine while choosing the best quality fruits and vegetables at the peak of ripeness. There are lots of benefits to picking your own. You're re-connecting with nature, supporting your local economy, and getting to know your local farmers. A visit to a U-pick farm is a great learning opportunity for kids. They experience firsthand where their food comes from and how it grows; and studies show they'll be more likely to eat their fruits and vegetables if they have a hand in the harvest.

### How To Find A U-Pick Farm

The Florida Department of Agriculture and Consumer Services (FDACS) maintains a list of U-pick farms throughout Florida, but, because such farms are not required to register with us, the list is not a complete one. (Note: Being listed does not imply that a U-pick farm is endorsed, approved, or otherwise sanctioned by FDACS.) If you know of a local U-Pick operation not included on this list, be sure to let the grower know of this marketing opportunity. Check out the list and browse farms by region or search by product type:

<https://www.freshfromflorida.com/Consumer-Resources/Buy-Fresh-From-Florida/U-Pick-Farms>

### What To Bring

Dress comfortably for your trip to the farm. Bring a hat, sunscreen, and insect repellent, and wear sturdy shoes to protect your feet. Remember to bring your own containers for picking in case the farm does not provide them. Calling ahead is recommended, as most are open only on a seasonal basis and may have specific times of operation.

### What's in Season?

Currently in north Florida, blueberries are in season. Next will be grapes, followed by persimmons. Whether from the farm or the grocery store, see what's in season year-round at: <https://www.freshfromflorida.com/Consumer-Resources/Buy-Fresh-From-Florida/Crops-in-Season>



# WHAT TO PLANT IN NORTH FLORIDA



## JUNE

### FLOWERS

### VEGETABLES

- Ageratum\*
- Angelonia
- Begonia, wax
- Coleus
- Dusty Miller
- Gomphrena\*
- Kalanchoe
- Melampodium
- New Guinea Impatiens
- Ornamental Pepper
- Pentas
- Torenia
- Verbena
- Zinnia
- Amaranthus\*
- Balsam\*
- Celosia
- Crossandra
- Gaillardia\*
- Impatiens
- Marigold
- Moss Rose
- Salvia
- Tropical Sage
- Vinca

- Beans, lima
- Jerusalem Artichoke
- Okra
- Peas, southern
- Eggplant
- Sweet Potato

### WATERING TIPS

Install a micro-irrigation system that uses water more efficiently by delivering small volumes of water directly to the root zone of plants through low-flow emitters, such as micro-spray jets, micro-bubblers, or drip tubes.

Disease problems may also be reduced when using drip tubes and drip emitters that keep irrigation water off of leaf surfaces.

Microirrigation kits are available for vegetable gardens and flower beds, plus they are easy to install and custom design to suit the layout of your garden.

Purchase a timer that hooks up to the spigot for help making sure you don't leave the water running longer than it needs to.

\*Indicates annuals that may begin declining in August and September as the end of summer nears.

# Fruit Care Calendar for North Florida

To be used as a guide when caring for fruit and nut trees in the home garden. All fertilizer recommendations are for optimum growth and fruit production. Gardeners may choose to apply less fertilizer than the recommendation, but should never apply more. When referring to the age of a plant, consider year 1 to be at planting or the first year after planting.

## JUNE

### Tips for Growing Fruits

Most edibles require at least 6-8 hours of full sunlight a day and prefer well-drained, slightly acidic soil.



Does the plant require cross-pollination or is it self-fertile??

If not self-fertile, you will need 2 or more plants to produce fruit.



Avoid low-lying areas to minimize flood injury and frost injury to flowers and developing fruit.



Select recommended varieties based on pest/disease tolerance, cold tolerance and required chilling hours.

Correct spacing is key for optimum growth, health, and fruit production.

### FERTILIZING

- Apples**  
Fertilize using 10-10-10 with micro-nutrients, esp Zinc and Boron; apply 1 lb (2 cups) for each year of age, up to 7.5 lbs (15 cups).
- Blueberries (Newly Planted)**  
After the soil is well settled from irrigation/rainfall, give un-mulched plants 1 oz. (2 TBSP) per plant of 12-4-8 with 2% magnesium (Mg). If plants are mulched heavily, use 1/5 oz. (3 TBSP) per plant. Spread fertilizer evenly over a 2-foot diameter circle.
- Blueberries (Established)**  
Fertilize with 12-4-8 with 2% magnesium (Mg). Year 2: Apply 2 oz. (4 TBSP) per plant spreading evenly over a 3-foot diameter circle. Year 3+: Apply 3 oz (6 TBSP) per plant spreading evenly over a 4-foot diameter circle, or broadcast in a continuous band 3-4 feet wide, centered on the plant row.
- Chestnuts (Year 2+)**  
Apply 1 lb (2 cups) of 10-10-10 fertilizer for each year of age with a maximum of 7.5 lbs (15 cups) per tree.
- Loquats**  
Apply a 6-6-6 or similar fertilizer this month, only as needed. Healthy, established trees require little to no fertilizer.
- Muscadine Grapes (Year 1)**  
Fertilize this month after growth begins using 1/4 lb. (1/2 cup) of 8-8-8 or 10-10-10; apply fertilizer in bands about 1 foot to either side of the vine. Micro-nutrients can also be beneficial.
- Pears**  
Apply 1/2 lb (1 cup) of 6-6-6 or 8-8-8 per year of age, up to 5 lbs (10 cups) total.
- Pecans**  
Fertilize using 10-10-10 with micro-nutrients (esp. Zinc) as follows: Year 1: 1 lb (2 cups) per tree; Year 2: 2 pounds (4 cups) per tree; Year 3+: 2 lbs (4 cups) per inch of trunk diameter, measured 1 foot above the soil (2-4 lbs for bearing trees). Large trees (30+ inches in diameter) may require 60 to 120 lbs. of fertilizer. Note: Beware of over-fertilization which can exacerbate pecan scab problems.
- Persimmons**  
Apply 1/2 to 1 lb (1-2 cups) of 10-10-10 with micro-nutrients per year of age, up to 10 cups total. If fruit drop is a problem, consider using a 5-10-10 or reduce fertilizer amounts.

MORE INFORMATION

For additional information on fertilizing, pruning and other resources, visit the Fruits page of the UF/IFAS Baker County Extension website: <http://sfyl.ifas.ufl.edu/baker/>

### Plastic Flower Pot Donations Needed!

If you have old, plastic nursery pots laying around, please consider donating them to the Master Gardener Program for recycling. We can accept all sizes, but particularly need gallon and quart sized pots. Feel free to deliver them to the front Extension Office. For large quantities, please place them at the back fence gate near the greenhouse. Thank you!

# Lucky Clover Chronicle

By:  
*Shaina Spann,  
4-H Agent*

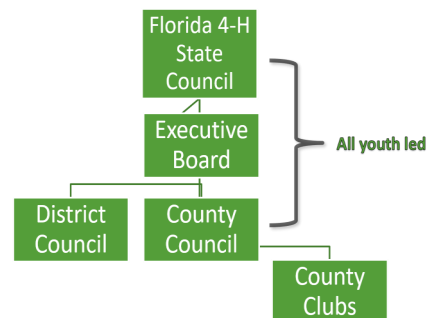


## Leadership Roles in 4-H

In April, Livestock Club elected their club officers. Every club should have a set of officers that are youth members to provide guidance to the club from the members' perspective. One step up from that is being an officer for County Council. County Council is made up of members from all clubs that help to plan and organize activities for the county 4-H program. Examples of those activities are: annual awards, fundraisers, community service opportunities, fun/social events.

Moving a higher level is District Council, which is made up of surrounding counties' council officers and members. That group plans functions for the District 5 area which includes Alachua, Baker, Bradford, Columbia and Union counties. They also have representatives that report to our state council and the State Officer team.

We are fortunate enough to have a Baker County 4-H member elected to District Council for the 2019-2020 year. Zane Fouraker who is a member of County Council was elected as the District Council Reporter! Zane has been a 4-H member and summer camper for 5 years and really wanted to take his 4-H experience to the next level. We are so happy and excited for Zane's next adventure with 4-H!



## 4-H SPONSORSHIPS SOUGHT

With repairs being made to the Ag Center, this year we are looking for program sponsorship rather than holding a public auction. A contribution would provide partial and complete scholarships for children to attend events, ranging in cost from \$110 to \$275, like Camp Cherry Lake, 4-H Legislature, 4-H University, as well as help fund volunteer screenings and school enrichment projects.

### Levels of 4-H Sponsorship:

- ◆ Emerald: \$300+
- ◆ Gold: \$200-\$299
- ◆ Silver: \$100-\$199
- ◆ Bronze: \$1-\$99

We are requesting that contributions be received by **Monday, June 10, 2019** to ensure scholarships can be given for this summer. Please mail or drop off contributions to the Extension Office, 1025 West Macclenny Avenue, Macclenny, FL 32063. All contributions are tax deductible and a thank-you letter will be mailed to you affirming the contributed amount. Please make checks payable to Baker County 4-H Association. If youth who are planning to attend any 4-H events would like to help gather donations, please contact Mrs. Shaina at 259-3520 or [slbennett@ufl.edu](mailto:slbennett@ufl.edu)

## 4-H Club Meetings & Events

*See upcoming summer camps on front page of newsletter!*

- **Cloverleaf Cloggers**— Contact Madeline for details.
- **County Council**- Not meeting over summer
- **Initial Market Animal Weigh-In**—June 8th, 7am-9am. BC Fairgrounds
- **Counselor Training**—June 17th, 9am-3pm. Extension Office
- **Camp orientation**—June 17th, 6pm. County Administration Building
- **Livestock Club**— June 25th, 6pm. Alpaca Farm—Accoyo Acres, 14454 North SR 121, Macclenny.
- **Speech Workshop**—July 18th, 9am-noon, Extension Office.



## 4-H Clubs Need Help!



We need people to help teach subjects at club meetings. If you or someone you know is knowledgeable about chickens, rabbits, cows, or arts & crafts, please contact Shaina at the Extension Office at 259-3520.



# Barnyard Bulletin

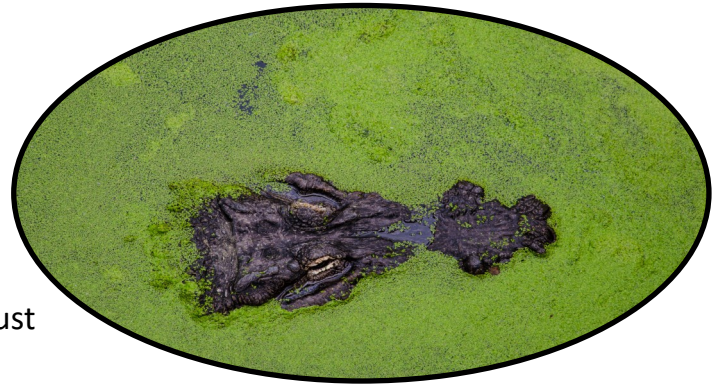
By:  
*Alicia Halbritter,*  
*Agriculture Agent*



## Pond Water Sampling

### Why sample?

Why would someone need to sample pond water? If you are having problems with algae, fish health, or water clarity, testing the pond water can help determine the root of the issue as well as provide guidance for solving the problem. Looking to stock a pond with fish? You should test the water first to make sure it is just right for those fingerlings!



### How do I sample?

The Extension office offers free pond water sampling! Here are some tips for getting the best sample:

- Use a recycled container, no smaller than 8 oz, no larger than 16 oz.
- Collect in the morning (between 7 and 8am) with a clean container.
- Try your best not to disturb the bottom while collecting.
- Completely submerge the container and cap it while under water.
- Do not shake container once sample is collected.
- Do not allow water to sit in hot sun or to freeze.

### What will the test tell me?

After testing you will receive emailed results & recommendations. The test includes: Dissolved Oxygen, Carbon Dioxide, pH, Alkalinity, Hardness, Ammonia, and Nitrites. You will receive the levels in your pond and be able to compare them to UF/IFAS recommended levels. If your levels are too high or too low, you will receive recommendations on how to correct the level.



We look forward to helping you develop healthy, beautiful ponds full of fish to catch!

Contact me to schedule your pond water testing today!

904-259-3520 or [alicia1221@ufl.edu](mailto:alicia1221@ufl.edu)



# Baker Beekeepers Association

Have you ever thought about having your own bees, are you an old time beekeeper or are you somewhere in between?

A local beekeeper club is getting started in Baker County . Meetings are scheduled for the second Tuesday of each month at 7pm in the Macclenny Firehouse Subs (1448 S 6th St.) conference room. The first meeting is set for June 11th at 7:00 PM.

This will be a casual meeting to discuss beekeeping techniques and offer new beekeeper training. If you sell bees or equipment, please join and let us know who you are so that the new beekeepers know where to get bees and supplies. If you are an experienced beekeeper come and share your ideas and experiences. If you're a new beekeeper or just getting started, come out and learn.

For more information, contact Jim Altmiller, 904-304-5800

## BOAT SMARTS

### STAY SAFE ON THE WATER

#### THE BOAT

- Know and obey boat-related regulations.
- Have the required safety equipment on your boat.
- Carefully handle gasoline. Keep fuel lines tight and refuel at docks or when anchored.
- Know your vessel and the waterways where you are boating.
- Approach other boats and launch your boat carefully.
- Keep hunting and fishing gear clean and well packed.
- Anchor from the bow, not the stern.

#### SAFETY

- Use common sense and courtesy.
- Wear a life jacket. Children under six must wear one while a vessel is underway.
- Do not operate a boat under the influence of drugs or alcohol.
- Stay alert. Watch for swimmers, divers, and other boats. Be aware of your wake around smaller watercraft and anglers.
- Stay dry and warm.

#### NATURE

- Pay attention to the weather.
- Do not litter.
- Respect plant and animal life.
- Boaters who accidentally strike a manatee, are urged to report the accident. If the boater was following any speed restrictions, they may avoid any prosecution.

Report boating and wildlife violations to **FWC Law Enforcement** by calling, 888-404-FWCC or #FWC or \*FWC

For more information, please visit [lfas.ufl.edu](http://lfas.ufl.edu)



# MASTER GARDENER VOLUNTEER TRAINING

## WHO ARE THE MASTER GARDENERS?

Master Gardeners are volunteer educators of the horticultural arts and sciences. With training from UF/IFAS Extension, Master Gardeners are active in their communities, offering leadership and guidance in gardening projects of all types and sizes.

The Florida Master Gardener Program has been around since 1979, and each year, approximately 4,700 Master Gardeners contribute a total of 365,000 hours of service, helping to make their communities better informed, more sustainable and more beautiful.

## WHAT DO MASTER GARDENERS LEARN?

If you're accepted into the Master Gardener training program, you'll receive 50 hours or more of practical horticultural training, on topics such as:

- Botany
- Plant pathology & integrated pest management
- Soil management & plant nutrition
- Growing garden vegetables, fruit crops, trees, & turf
- Florida-Friendly Landscaping™
- Working with the public

## WHAT DO MASTER GARDENERS DO?

Once you've successfully completed training you're required to volunteer a minimum of 75 hours the first year to achieve Master Gardener certification. Master Gardeners work closely with the public, answering questions and providing guidance over the phone or in person, participating in community and school garden projects, writing newsletter columns, and many other activities.

Master Gardeners that continue in the program beyond the first year are asked to volunteer 35 hours annually and attend advanced trainings to keep up to date on the latest horticultural information.

## 2019 BAKER COUNTY TRAINING DATES

<b>DATES</b>	<i>August 6 - September 12</i>  Tuesdays & Thursdays	<b>LOCATION</b>	<i>Baker County Extension Office</i>  1025 W. Macelenny Ave. (Agricultural Center)
<b>TIMES</b>	<i>9 am to 12 pm &amp; 1:30 pm to 4:30 pm</i>  Unless otherwise noted on schedule	<b>COST</b>	<i>\$100</i>  Includes Student Manual, Field Guides, & All Training Supplies

## APPLICATION DUE JULY 19

<http://sfyl.ifas.ufl.edu/baker/horticulture/master-gardener-program/>

## COORDINATOR

*Alicia  
Lamborn*

Horticulture Agent & Master Gardener Coordinator  
(904) 259-3520  
alamborn@ufl.edu

UF/IFAS EXTENSION PRESENTS

# GRAPE FIELD DAY

Tuesday  
July 16, 2019  
9:30AM-3:30PM

UF IFAS Extension  
UNIVERSITY OF FLORIDA

**NO  
REGISTRATION  
FEE**

**PLEASE RSVP BY JULY 9**  
[grapefieldday2019uf-ifas.eventbrite.com](http://grapefieldday2019uf-ifas.eventbrite.com)  
or to Staci Sanders (352) 591-2678

## Frank Stronach Conference Center

UF/IFAS Plant Science  
Research and Education Unit  
2556 West Highway 318  
Citra, FL 32113



## Questions?

Contact Juanita Popenoe,  
Multi-County Commercial  
Fruit Production Agent,  
UF/IFAS Extension  
Lake County at  
[jpopenoe@ufl.edu](mailto:jpopenoe@ufl.edu) or  
352-343-4101 ext. 2727

## AGENDA

9:30-10AM	<b>Registration and Welcome</b> Mr. J. R. Newbold, Drs. Sarkhosh, Peterson, Popenoe and PSREU team
10-10:20AM	<b>Enhancement of Nutrient uptake in Vineyard Using soil Amendments</b> Dr. Ali Sarkhosh, UF/IFAS Horticultural Sciences Department
10:20-10:45AM	<b>Disease Management in Muscadines and Pierce's Disease Resistant Hybrids</b> Dr. Phillip Brannen, UGA/Department of Plant Pathology
10:45-11:10AM	<b>Breeding Muscadine Grape for Fresh Market</b> Dr. Patrick Conner, UGA/Department of Horticulture
11:10-11:35AM	<b>Vineyard Trellising - Thoughts &amp; Digressions</b> Mr. Ron Guzzetta, Vineyard Manager at Lakeridge Winery & Vineyards Clermont, FL
11:35AM-12PM	<b>Pruning of Muscadine Grape</b> Dr. Violeta Tsolova, FAMU/Center for Viticulture and Small Fruit Research
12-1PM	<b>Lunch</b>
1-1:30PM	<b>Breeding Muscadine for Health Beneficial</b> Dr. Islam Elsharkawy, FAMU/Center for Viticulture and Small Fruit Research
1:30-2PM	<b>Practical Pest Management for Muscadine Grapes</b> Dr. Oscar Liburd, UF/IFAS Entomology and Nematology Department
2-2:30PM	<b>Muscadine Grape Sparkling Wine</b> Dr. Andrew MacIntosh, UF/IFAS Food Science and Human Nutrition Department
2:30-3:30PM	<b>Field Plot Tour</b> Drs. Popenoe, Sarkhosh, Gabriel, and Liburd