

Baker County Extension Service
1025 West Macclenny Avenue
Macclenny, FL 32063

Phone: (904) 259-3520
FAX: (904) 259-9034

Email: michael.davis@ufl.edu
Website: <http://baker.ifas.ufl.edu>

Non-Profit Org.
US Postage
PAID
Permit No. 17
Macclenny FL 32063



IFAS EXTENSION



Baker County Extension Service Monthly Newsletter

January 2011

Extension programs are open to all people regardless of race, color, age, sex, handicap, or national origin. In accordance with the Americans with Disabilities Act, any person needing a special accommodation to participate in any activity, should contact the Baker County Cooperative Extension Service at 1025 West Macclenny Avenue, Macclenny, FL 32063 or telephone (904) 259-3520 no later than five (5) days prior to the event. Hearing impaired persons can access the foregoing telephone by contacting the Florida Relay Service at 1-800-955-8770 (voice) or 1-800-955-8771 (TDD).

Upcoming Horticulture Programs & Events: January—March

All programs will be held at the Baker County Extension Office (Agricultural Center).

January 31st — Master Gardener Program—Applications Due



The Baker County Master Gardener program is a program of volunteers who help the University of Florida IFAS Extension Service by extending unbiased, research-based gardening information to people in our community. This is a great opportunity for anyone who enjoys gardening and wants to volunteer for our community, plus we teach you everything you need to know.

All trainings will take place at the Baker County Extension Office on Tuesdays and Thursdays from 9:00am to 1:00pm starting February 15th until the end of March. The cost for all training materials is \$55 for individuals and \$65 for couples. Visit our website or stop by the Extension office for an application packet.

February 3rd — Budding and Grafting Workshop 6:00pm to 7:00pm. Local growers will be demonstrating budding and grafting techniques and provide materials for a hands-on experience! The cost is \$5 in advance; class is limited to 20 participants — sign up today!

February 21st — Vegetable Gardening Class 6:00pm to 7:00pm. Save money and eat healthy by learning to grow your own vegetables! Topics covered: preparing the garden, plant selection, planting, watering, fertilizing. We will also discuss soil pH and the use of lime which is commonly misused. Please call (904)259-3520 to register by Friday, Feb. 18th.



March 26th — Beekeeping Short Course 9:00am to 5:00pm. This hands-on short course, involves working an active hive on Extension Center property. At the end of the course we will demonstrate how honey is “robbed” from the bees and all participants will take home a jar of local honey. This course will allow participants to receive a complete perspective of the process/expense involved with keeping honey bees as a hobby. There is a \$10 registration fee (\$15 per couple) for the course to cover the purchase of materials. Please visit our website (<http://baker.ifas.ufl.edu>) for further details and registration form. We must have at least 15 participants registered to hold the course, so sign up today!



INSIDE THIS ISSUE:

Horticulture	2
Family & Consumer Sciences	3
4-H	4
Agriculture	5
Calendar	6
Notices	7
Upcoming Horticulture Programs & Events	8

Dear Extension Friends,

Happy New Year! I hope that everyone had a happy and safe holiday season. As you can see, we have made some changes to the newsletter format for the Baker County Extension Service. We have combined all of our newsletters (Agriculture, Horticulture, Family & Consumer Sciences and 4-H) into one newsletter for the Extension Service. The content of the newsletter will also be online. You will notice a cut-out on the back page. We have to update our mailing lists each year, so please let us know if you would like to continue receiving the Baker County Extension Newsletter. As always, if we can be of assistance, please do not hesitate to contact us.

Sincerely,

Michael A. Davis
County Extension Director / Ag Agent
Baker County Extension Service



Contact Information—Baker County Extension Service

1025 W. Macclenny Ave., Macclenny, FL 32063
Phone: (904) 259-3520, FAX: (904) 259-9034
Email: baker@ifas.ufl.edu

Michael Davis, Ph.D.

Agriculture Agent



Alicia Lamborn

Horticulture Agent



Melanie Thomas

Family & Consumer Sciences Agent



Reneé L. Gore

4-H Agent



The Institute of Food and Agricultural Sciences (IFAS) is an Equal Opportunity Institution authorized to provide research, educational information, and other services only to individuals and institutions that function with non-discrimination with respect to race, creed, color, religion, age disability, sex, sexual orientation, marital status, national origin, political opinions, or affiliations. U.S. Department of Agriculture, Cooperative Extension Service, University of Florida, IFAS, Florida A&M University Cooperative Extension Program and Boards of County Commissioners Cooperating.

Highlights in Horticulture

By:
Alicia Lamborn,
Horticulture Agent

FIRST REQUEST

If you would like to remain on the **Baker County Extension Service Newsletter** mailing list in 2011, please complete the form below and mail it or bring it to our office. Individual program newsletters, such as Horticulture and FCS will continue to be produced individually on an electronic basis. You can renew any newsletter subscription by visiting our website at <http://baker.ifas.ufl.edu>.

NAME: _____

ADDRESS: _____

CITY: _____ STATE _____ ZIP _____

PHONE: _____ RACE _____ GENDER _____

Please check this box if you prefer to receive the newsletter by email.

EMAIL ADDRESS: _____

Please return this form to our office or mail it to: Baker County Extension Service
1025 W. Macclenny Ave.
Macclenny, FL 32063

Species Spotlight

Species spotlight is a new section this year that will appear each month, highlighting a different species of plant, insect or animal. I hope that you will enjoy learning more about some of the special and interesting species found in Florida, and let us know if there is a particular species that you would like us to feature.

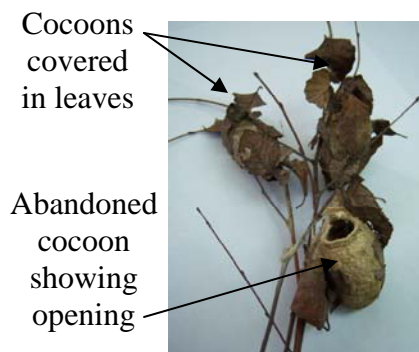
This month, we feature two species: the Polyphemus Moth and one of its host plants, the River Birch.

Polyphemus Moth:

The Polyphemus Moth is a giant silkworm named after Polyphemus, the one-eyed giant of Greek mythology. This moth has a large, oval, transparent eyespot on each hind wing edged with yellow, blue, and black (shown right).

This moth is relatively common in Florida and can also be found throughout the United States, southern Canada, and south into Mexico. The larva (caterpillar) feeds on the foliage of many species of trees (called host plants), including oak, maple, basswood, beech, butternut, walnut, birch, yellow-poplar, sassafras, ash, willow, elm, and sycamore.

This species usually spends the winter in its silken cocoon, which is typically covered in leaves but easily noticed hanging from the twigs of its deciduous host plants. Adult moths emerge from their cocoons after March, although warm temperatures in January or February may cause it to emerge early. Because of Florida's mild weather, this moth may be seen at any time of the year, usually at night around street lights.



River Birch Tree:



The River Birch (*Betula nigra*) can grow 50 to 90 feet tall but is often seen 40 to 50 feet. It has a narrow, oval to pyramidal crown when young, spreading wider with age as several branches become dominant. River birch can be easily trained with one central leader or as a multi-stemmed tree. It lacks the white trunk bark associated with other birches but is distinguished by reddish, brown peeling bark which provides interest all year round.

As the name implies, River Birch is well-suited for planting along stream banks but actually tolerates a wide range of soil types including clay, sand, loam, extended flooding and well-drained. It is also very resistant to pests and diseases. This tree grows quickly, needing full or partial sun, plenty of space for root growth, acidic soils and adequate water during dry spells.

The cultivar 'Heritage' grows 50 feet tall, has an oval shape, and scaly bark that is beige in color and is the closest to a paper white birch that will survive in hot areas; it is also tolerant of poor drainage. It is the more vigorous of the species.

Arboretum Update

The Baker County Arboretum is currently being installed at the Baker County Extension Office! Installation began on December 15th and will continue into the new year.

Don't forget to visit our website occasionally for up-to-date information and visit the new photo gallery section while you're there!

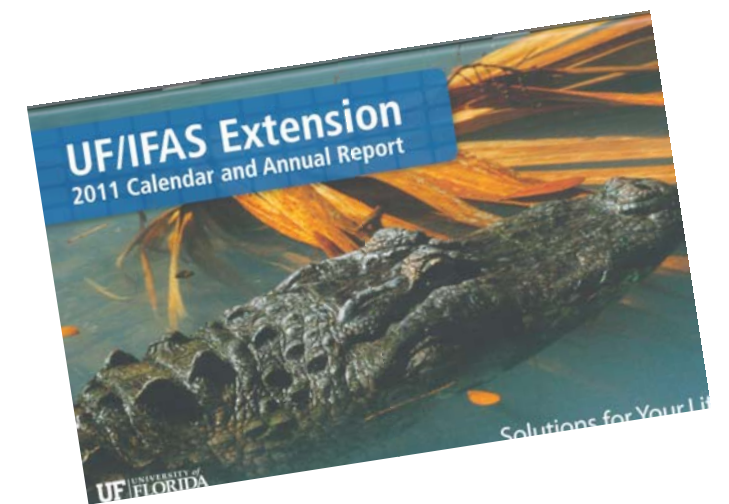
<http://baker.ifas.ufl.edu/BakerCoArboretumandTeachingGardens.html>

The Baker County Arboretum Grand Opening is scheduled for April 29, 2011 (National Arbor Day).

'High Rise' Live Oak



Get Your 2011 UF/IFAS Extension Calendar



Stop by the Extension Office to pick up a free 2011 calendar filled with colorful photos and solutions for your life!

Available while supplies last.

January 2011

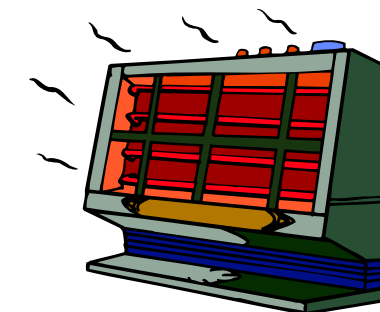
Living Well in Baker County

By:
Melanie Thomas,
FCS Agent

Each year, hundreds of people go to hospital emergency rooms because of injuries related to space heaters. When clothing comes in contact with a heating element or flame it can catch fire. Leaking gas can cause explosions. Inhaling carbon monoxide from a malfunctioning, poorly vented, or unvented gas heater can cause death.

General Safety Tips for All Space Heaters

1. Read the label and follow the instructions for installation and operation.
2. Keep paper, clothing, furniture, and especially children away from space heaters.
3. Keep the heater in safe working condition. Replace any missing grille, guard, or controls at once.



Safety Tips for Electric Space Heaters

1. Free-standing electric heaters should have tip-over switches. These switches shut off the current if the unit is knocked over. This helps prevent a fire if the heater falls against fabric or other flammable materials.
2. There must be a guard around the heating coil of your heater. A wire grille or other protection is essential to keep fingers or fabrics from touching the hot coil.
3. If you must use an extension cord, make sure it's marked with a power rating at least as high as that on the label of the heater itself.
4. Keep it away from water! Don't use a portable electric heater anywhere in a bathroom or near a sink.

Safety Tips for Gas Space Heaters

1. Your gas space heater should be properly vented. The vent pipe should have no cracks through which deadly carbon monoxide might leak. An undersized or clogged vent is very hazardous.
2. If you must use an unvented heater, keep a door or window slightly open at all times. Good ventilation during use is crucial!
3. Light the match before you turn on the gas, to prevent accumulation of gas. This will prevent gas from flaring up when you bring the match near.
4. Remember that a space heater can ignite flammable liquids and vapors. Never use a space heater in the same room where gasoline is stored. Never use a space heater where paint thinners, kerosene, or other volatile liquids are being used.

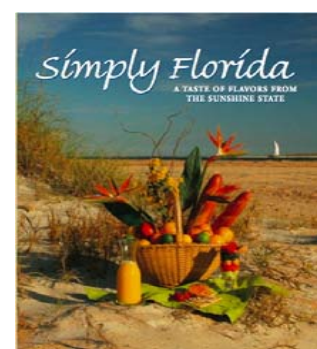
Safety Tips for Kerosene-, Oil-, or Wood-burning Space Heaters

1. These should be properly vented to prevent the accumulation of carbon monoxide.
2. Use only the fuel for which the heater was designed. Don't use kerosene in an oil heater and vice versa.

Never use highly flammable liquids--like gasoline--to get a wood stove started.

Source: Harrison, Mary, *Keeping it Safe: Space Heaters*, FCS5233-02, University of Florida

Sun	Mon	Tue	Wed	Thu	Fri	Sat
				4-H Clover-leaf Clog-gers Each Thursday at the Fair-grounds		1 HAPPY NEW YEAR!!!!
2	3	4	5	6 All County 4-H Club Classroom 6:30 pm	7	8
9	10	11 Hoof N Around 4-H Club Class-room 6:30pm	12 Forest Stewardship	13	14	15 Archery 4-H Club Class-room 10-11:30 am
16	17	18 Forestry 4-H Club Class-room 6:pm	19 Land Management	20 CFEOR Jr. Master Gardener 4-H Club Class-room 6PM	21	22
23	24	25 Youth De-velopment Institute for 4-H Vol-unteers & Staff Gainesville	26 YDI	27 YDI Livestock 4-H Club Audi-torium 6PM	28 YDI Farm Food Safety	29 Agriunity YDI Field Day Archery (Tentative) 4-H Club 10-11:30 am
30	31 Master Gardener Applications Due				FEB 4: Game Management	



Simply Florida: A Taste of Flavors from the Sunshine State

Looking for a great gift idea for that gourmet cook in your life? The new *Simply Florida* cookbook created by Family & Consumer Sciences agents throughout Florida is the perfect choice! Order your copy today by calling Melanie at (904) 259-3520 or by visiting <http://www.simplyflorida.org>.

The Clover Chronicle

By:
Reneé Gore,
4-H Agent

4-H Blog Spot

The 4-H Blog can be found at <http://4hbakerco.blogspot.com> If you are interested in keeping informed of upcoming 4-H news and activities I hope that you will subscribe to the blog. It is very easy just go there and click the link.

There are movies from the kick off this year, the fair, archery project. November I ran a whole month of articles promoting and educating members on county events participation. It will be the go to spot for 4-H members to get up to the minute information.

You may be wondering what a blog is? It comes from the blending of Web Log.

Eblogger says "A blog is a personal diary. A daily pulpit. A collaborative space. A political soapbox. A breaking-news outlet. A collection of links. Your own private thoughts. Memos to the world. Your blog is whatever you want it to be. There are millions of them, in all shapes and sizes, and there are no real rules. In simple terms, a blog is a web site, where you write stuff on an ongoing basis. New stuff shows up at the top, so your visitors can read what's new. Then they comment on it or link to it or email you. Since Blogger was launched in 1999, blogs have reshaped the web, impacted politics, shaken up journalism, and enabled millions of people to have a voice and connect with others. And we're pretty sure the whole deal is just getting started."

Check out the Baker 4-H Blog because this is going to become the way to stay in the loop on 4-H happenings. Volunteer to be a guest blogger. Send me information you wish to see posted about your activities and club events.



More Than You Ever
Imagined!



4-H Advisory Board Update

The report given to the overall advisory board this December was that 4-H has exhibited a 32% increase in membership over the past three years (2007 – 2010). This past year we had 698 calls and 495 visits for 4-H here at the office. Financial contributions to clubs and the program were \$4,668.00. Volunteer contributions in dollars of man hours of service totaled \$50,593.00 for the 76 leaders, parent volunteers, advisory board members and occasional volunteers. There are 12 organized groups that 8 are chartered clubs. Baker County 4-H is alive and well moving into the new program year.

The 4-H advisory board keyed in on continuing the diversity of the program offerings for youth in the Baker County Communities. They asked for an expansion of effort to share programming with underserved audiences. They directed Ms. Renee' to continue to make every effort to gain financial support through donations, grants and program sponsorships. One of the goals of the advisory board is to identify key individuals in the Community that are interested in promoting positive youth development and can advise the 4-H program and help with these sponsorship efforts.

Ag & Natural Resources Notes

By:
Michael Davis,
Agriculture Agent

Economic Contributions of Ag & Related Industries

Agriculture and related industries contribute greatly to the economy of Florida and Baker County. Below are some facts as they relate to Agriculture and Related Industries in Baker County. For 2008

- Overall output of Agriculture, Natural Resources and Related Industries was \$66.9 million.
- Exports of these industries from Baker County totaled \$22.2 million.
- Agriculture, Natural Resources and Related Industries employed 1,039 people.
- Crop, Livestock, Forestry and Fisheries production accounted for \$23.1 million in output.
- Agriculture, Natural Resources and Related Industries exported 33% or 1/3 of the products produced in Baker County out of the county.
- Agriculture, Natural Resources and Related Industries are the 3rd highest employer in Baker County



These are just a few of the reasons why Agriculture and Natural Resources are a vital factor in the continued economic stability of Baker County Florida.

Source: *Economic Contributions of Agriculture, Natural Resources and Related Industries in Florida Counties* (Sponsored Project Report to Florida Farm Bureau Federation), ©2010, University of Florida, IFAS. Mohammed Rahmani, Alan W. Hodges and Rodney L. Clouser.

Upcoming Forest Stewardship, Small Farm & Natural Resource Events - 2011

- Jan. 12:** **Forest Stewardship Workshop: Invasive Exotic Plants and Their Control.** 9 am - 3 pm. Trout Lake Nature Center, Eustis, FL. Details and registration at <http://fsp-workshop011211.eventbrite.com/>
- Jan. 19:** **Land Management Workshop.** 9 am - 2 pm. Tenroc Fish Management Area. Topics include fisheries management, exotic vegetation control, prescribed fire, habitat management, and assistance programs. Contact Cheryl Whitney at (863) 534-7077.
- Jan. 20:** **CFEOR Tour of Green Circle Bio-Energy Plant.** Cottdale, FL. Details and registration can be found at <http://www.sfrc.ufl.edu/CFEOR/Upcoming%20Events.htm#green>.
- Jan. 28:** **Building Your Own Farm's Food Safety Manual.** Bushnell, FL. For more information, contact Sarah White at (386) 362-1725, ext. 102 or sewhite@ufl.edu.
- Jan. 29:** **Agriunity 2011.** Bushnell, FL. West Central Florida Agricultural Center. For more information, call (352) 793-2728, ext. 221.
- Feb. 4:** **2010-11 FL-GA Game Management Update Series, Financing Conservation on Private Lands.** UF IFAS Leon County Extension Center, Tallahassee, FL. Cost is \$25, lunch and materials included. Details and registration online at <http://flgagmus.eventbrite.com/>