



## The Baker Bulletin

A  
Baker County  
Extension  
Service Monthly  
Newsletter

### INSIDE THIS ISSUE:

**HOW TO MAINTAIN  
GARDENING TOOLS**

**USING BY-PRODUCTS TO FEED  
CATTLE OVER WINTER**

**4-H Holiday Bake-Off / Chili Winners!**

**NATIVE FLORA AND FAUNA:  
SUGARBERRY & HARVESTER BUTTERFLY**

**EDIBLES TO PLANT IN DECEMBER**

**2022 NEWSLETTER  
SURVEY WINNER**



*The UF/IFAS Extension Office is available to help you with your farming, gardening, landscaping, and 4-H youth development needs by providing educational programming, free consultations and information. Contact us at:*

### UF/IFAS Extension Baker County

1025 W. Macclenny Ave. Macclenny, FL 32063

Phone: (904) 259-3520

Email: baker@ifas.ufl.edu

Hours: M—F 8:30 am to 5:00 pm (Closed Noon to 1:00 pm for Lunch)

### County Agents

**Alicia Lamborn** Horticulture Agent

**Shaina Spann** 4-H Youth Development Agent

**Alicia Halbritter** Agriculture & Natural Resources Agent



## Programs & Events

- Feb 10 **Small Scale Mushroom Production** (NFREC-SV, Live Oak) Topics include shiitake log production, oyster in bag production, and handling/processing/marketing. Registration includes lunch. [Register here](#) before January 24th. For more information call (386) 219-4276.
- Online **Growing Strawberries** (Self-Paced Course — Free!) Class topics include how to select, plant, and grow strawberries in the home garden. [Register here](#)
- Online **Growing Blueberries & Blackberries** (Self-Paced Course — Free!) Topics include variety selection, care and maintenance, pest management, and even a section on raspberries! [Register here](#)
- Online **Selling Backyard Poultry Products** (Self-Paced, Online Course) Learn how to start or improve a business selling eggs, meat, or live poultry in the state of Florida. [Register here.](#)
- Online **Backyard Chicken Class** (Self-Paced, Online Course) Learn how to successfully raise chickens in your backyard. [Register here.](#)

# Highlights in Horticulture

By: *Alicia Lamborn,*  
*Horticulture Agent*



## Planting for Winter Color

Your winter landscape doesn't have to look drab, and with a little planning you can keep your flower beds and containers looking fresh month after month. For example, pairing poinsettias with dusty miller (top right) works well in December. Then when the poinsettias fade, you can change them out for something like snapdragons (lower right) or dianthus to add a fresh pop of color.








## Bold and Beautiful Container Gardens

You can provide eye candy to your landscape or patio with bold, beautiful containers that showcase plants with attractive flowers and foliage. Use the guideline "*thrillers, spillers, and fillers*" when choosing plants. "Thrillers" are large, colorful foliage plants or tall, bright flowering plants. Ornamental grasses can also work well. "Spillers" are plants that fall gracefully over the sides of the containers, while "fillers" are typically plants with rounded forms or interesting textures. Keep in mind that not all containers must have all three components (like this container of alyssum and pansies shown immediately right) as long as the container complements the plants.



Photo credits: Canva

## Winter Annuals Tips for Success

-  Add organic matter to planting beds or use a good quality potting mix for containers.
-  Use a controlled-release fertilizer for steady growth through the season.
-  A full sun location is best, and water thoroughly after planting.
-  For striking visuals and biggest impact, limit the varieties and colors of flowering plants you choose.
-  Deadheading, or removing old blooms, will keep them setting new flower buds.

## COLOR YOUR LANDSCAPE: DECEMBER

### WHAT TO PLANT:

- ALYSSUM - BABY'S BREATH
- CALENDULA - DELPHINIUM
- DIANTHUS - DUSTY MILLER
- FOXGLOVE - HOLLYHOCK
- ORNAMENTAL CABBAGE/KALE
- PANSY - PETUNIA
- SNAPDRAGON
- VERBENA
- VIOLA



Snapdragon



Foxglove

\*Annuals to plant in North Florida

# Barnyard Bulletin

By:  
*Alicia Halbritter,*  
*Agriculture Agent*



## Hay Feeders for Livestock

As hay prices increase it's important to make sure we are preventing hay waste. Hay is somewhere between \$1.50-\$2.50 per animal, per day. Without hay feeders livestock can waste over 42% of the product, significantly increasing your overall hay costs over the winter. Check out these hay feeders for various livestock types:

### Hay Rings

Hay rings vary in style and style often has an impact on price. If available, utilize a hay ring that has a solid rim around the bottom. This solid rim prevents more waste and also makes it harder for livestock to pick up feeders. Hay rings can easily be placed with equipment or even with just one person, therefore they are ideal for many operation types and livestock species.



### Fenceline Feeding System

This system is ideal for situations where large round bales are fed all-year round. A fence-line system may not be cost-effective for an operation that only feeds hay in the winter. However, this system provides premium accessibility as the operator never has to enter the place where livestock are to feed hay. However, because animals won't have access completely around the bale it does reduce the number of animals that can feed at one time, and the hay may need to be piled closer to the fence as the bale diminishes.

### Cradle Type Feeders

Cradle feeders will hold an entire round bale (or square bale) off of the ground. Animals must reach up to grab a bite. Any hay that falls is caught in a catch pen or trough and helps minimize waste more effectively. These types are feeders are good for smaller livestock species (make sure to prevent access from standing in the trough, especially with goats) and allow larger amounts of hay to be used with less risk of spoilage.

### Hay Nets

Hay nets, or slow feeders, can be helpful if a hay ring is not feasible for some reason. Various hay nets exist with a ranging size of holes in the net. Animals with access to hay nets should be supervised more closely in case they become entangled. Generally nets will have to be replaced more often than a metal feeder as the rips allow for more waste to occur and more chance for animal injury.



## Holiday Party, Bake-Off, and Chili Cook-Off Results

The Holiday Party had 68 members and guests that enjoyed 9 wonderful pots of chili, hot apple cider, and 28 desserts. After awards and dinner, there were Holiday Minute-To-Win-It Games with prizes that were so much fun!

Our overall winners were:

- Baking Golden Spoon Award & Pie Category: Gabriel Finley with his Italian Cream Cheese and Ricotta Cheesecake
- Chili Gift Basket: Brenda Dugard with her White Chicken Chili
- Cakes– Grady Fish with his Cherry 7Up Cake
- Cupcakes– Payton Finley with her Burnt Honey Joy Cheese Cupcakes
- Honey– Sadie Harvey with her Honey Roasted Almonds
- Decorated Items– Caroline Clark with her Red Velvet Present Cake Pops
- Cookies– Kenley Johnson with her Christmas Sugar Cookies
- Brownies– Olivia Lamborn with her Rockin’ Around the Christmas Tree with Rudolph and Frosty Brownies
- Candies– Kallie davis with her Peanut Butter Balls



**Congratulations to all of our Holiday Bake-Off Participants!**



## 4-H Club Meetings & Events

- January 9– 4pm, Cloverbuddies Club, 4-H Classroom
- January 17– 6pm, Baker’s Busy Bees, 4-H Classroom
- January 24– 6pm, Livestock Club, Ag. Center Auditorium
- January 27 and 28, Livestock and Meats Judging Clinic, UF Meat Laboratory and UF Horse Teaching Unit 2250 Shealy Dr Gainesville, FL 32608 Register through [Eventbrite](#)

# Florida's Native Flora & Fauna

By: Alicia Lamborn, Environmental Horticulture Agent

Featuring some of Florida's native flora (plant life) and fauna (animal life) so you can learn to recognize, appreciate, and protect native species. We'll also aim to dispel myths and provide tips for managing conflicts with wildlife.

## Sugarberry

Although losing their leaves this time of year, the deciduous Sugarberry (*Celtis laevigata*) is a large, fast-growing tree that makes a wonderful shade tree. Commonly reaching 50 to 70 feet in height and width when open grown, this North American native is not commonly available in nurseries but is a must have for natural landscape settings.

Leaves of this species are light to medium green, turning yellow in fall which can be quite showy. While the flowers usually go unnoticed, the orangish-red fruits turn deep purple when ripe attracting many species of birds. This tree is also known for its brown gray to silvery bark with corky ridges or projections, making it attractive in wintertime.



Growing in full sun or partial shade, Sugarberry will tolerate a wide variety of soil types from clay to sand, alkaline to acidic, and wet to well-drained. It is highly drought tolerant and salt tolerant, but grows best in moist, fertile soils in a full sun location.

Photo credits: UF/IFAS <https://edis.ifas.ufl.edu/publication/ST138> and Alicia Lamborn, UF/IFAS Extension Baker County

## Harvester Butterfly

Although I consider myself to be well-versed in the topic of pollinators, I decided to take a Gardening for Pollinators online course (because there is always more to learn, right?). Well, one thing that was completely new to me was learning about the Harvester Butterfly!

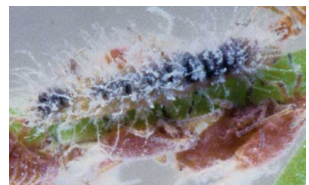
What makes the Harvester so unique is that the caterpillar of this small butterfly are the only strictly carnivorous butterfly species in the United States!

While their range extends from southern Canada to central Florida and central Texas, populations tend to be highly localized in swampy areas and wet woodlands that also have populations of woolly aphids (their host insects). The common prey species in Florida are woolly maple aphids and woolly alder aphids that suck sap from greenbrier plants and hazel alder, respectively.

Because the species is carnivorous, development proceeds rapidly, pupating in as little as eight days and only having four larval instars (most other butterflies have five). Young larvae may restrain their larger prey with silk prior to attacking them, and some even cover themselves with the remains of woolly aphids they have eaten.



The adult Harvester butterfly (above) and pupa (below).



Early instar larvae partially covered with woolly aphid prey (above) and full-grown larva (below).



Photo credits and excerpts from: UF/IFAS [https://entnemdept.ufl.edu/creatures/bfly/harvester\\_butterfly.htm](https://entnemdept.ufl.edu/creatures/bfly/harvester_butterfly.htm)




# Extension Tidbits

## EDIBLES TO PLANT IN *December*

North

Central

South

 <p>Easily Survives Transplanting</p>	<p>Arugula, Beets, Broccoli, Brussels Sprouts, Cabbage, Cauliflower, Chinese Cabbage, Collards, Kale, Kohlrabi, Sugarcane, Swiss Chard</p>	<p>Arugula, Beets, Broccoli, Brussels Sprouts, Cabbage, Cauliflower, Chinese Cabbage, Collards, Eggplant, Endive, Kale, Kohlrabi, Lettuce, Peppers, Sugarcane, Swiss Chard, Tomatillo, Tomatoes, Tropical Spinaches</p>
 <p>Transplant Carefully</p>	<p>Celery, Mustard, Pineapple, Potatoes, Spinach</p>	<p>Amaranth, Calabaza, Celery, Long Squash, Luffa, Mustard, Pineapple, Potatoes, Seminole Pumpkin, Spinach, Seminole Pumpkin, Sweet Potatoes</p>
 <p>Use Seeds</p>	<p>Carrots, Onions (bunching), Radish, Turnips</p>	<p>Beans (bush, lima, pole), Cantaloupes, Carrots, Corn, Cucumbers, Onions (bunching), Peas (English, southern), Radish, Squashes, Turnips, Watermelon</p>

**UF** IFAS Extension  
UNIVERSITY of FLORIDA



Gardening  
SOLUTIONS

For more information, please visit  
[GardeningSolutions.ifas.ufl.edu](http://GardeningSolutions.ifas.ufl.edu)

## 2022 Baker Bulletin Newsletter Survey

Many thanks to the **51** people that provided information and feedback this year!



The information is so helpful and clearly shows that we are making an impact!

Congratulations to this year's gift basket winner:



**Linda Swanson**